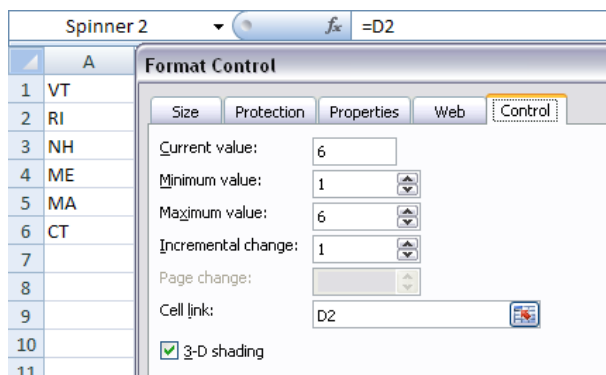


A Spinner Control Referencing an Array

Instead of an integer value or a calculated result, we want to spin through a series of choices.

	A	B
1	CT	State
2	MA	
3	ME	
4	NH	
5	RI	
6	VT	

To place the correct state code in B2, we want a Spinner Control to spin through all the possibilities. Add a spinner to B3, then right-click the control and select Format Controls...



Since we have six states in our array of state code, our maximum value is 6. The result cell is D2 and will contain a number from 1 to 6. We will use this value to choose the nth state code from the array. Enter the following formula in B2: `=INDEX(A1:A6,D2,1)`

	A	B	C	D
1	VT	State		
2	RI	CT		6
3	NH			
4	ME			
5	MA			
6	CT			

The INDEX function lets us pick one value from an array of values. The first argument describes the range containing the array. The second is the cell containing the element of the array to be selected. The third describes the column in the array to be used. Some arrays have multiple columns of data and 1=the first column, 2=the second column, etc.

By setting the starting value at 6 and sorting the array in Z to A order, the up arrow on the spinner causes the results to go up the alphabet and the down arrow to go down.